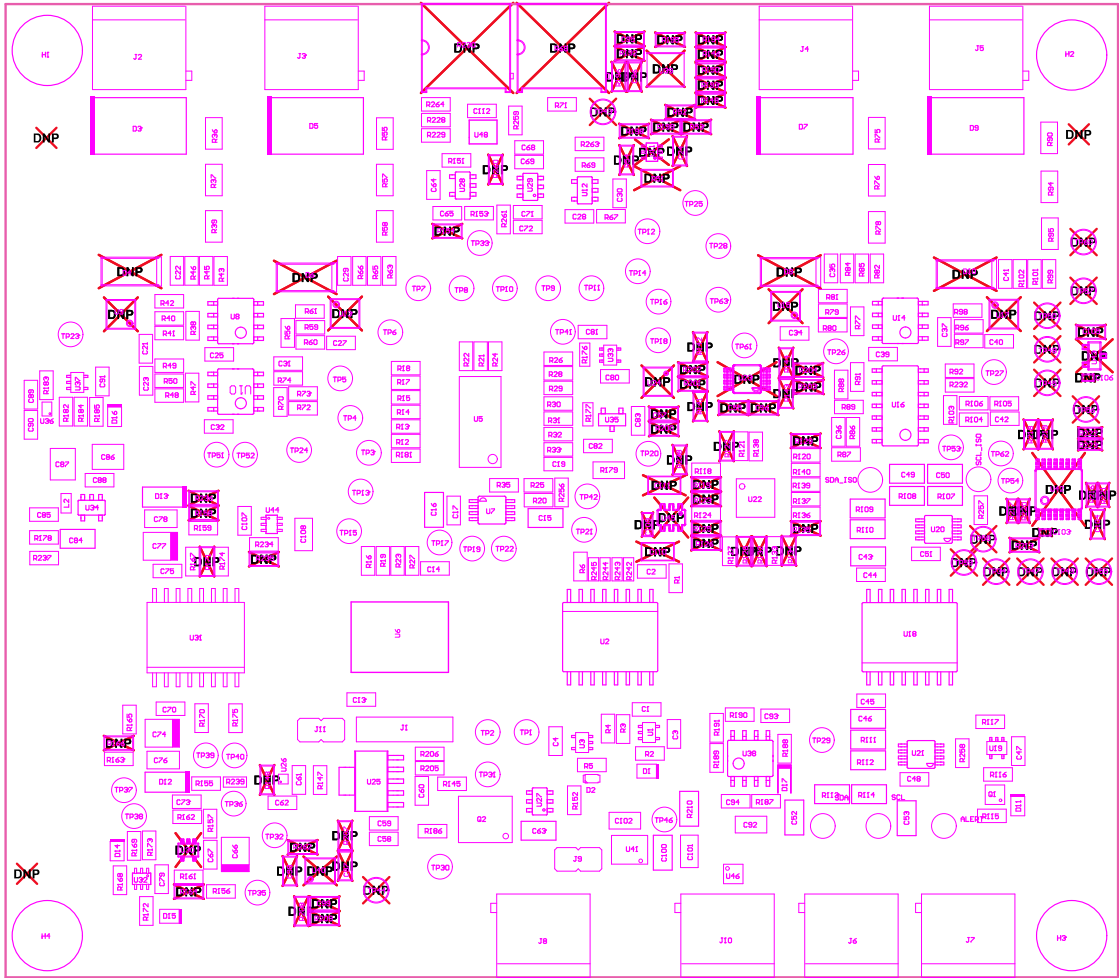


- 221 ■ Install label in silkscreened box after final wash. Text shall be 8 pt font. Text shall be per Label Table in the PDF schematic.
- 222 ■ These assemblies are ESD sensitive, ESD precautions shall be observed.
- 229 ■ These assemblies must be clean and free from flux and all contaminants. Use of no clean flux is not acceptable.
- 224 ■ These assemblies must comply with workmanship standards IPC-A-610 Class 2, unless otherwise specified.



COMPONENTS MARKED "DNP" SHOULD NOT BE POPULATED.

ASSEMBLY VARIANT:

001

PCB VIEWED FROM TOP SIDE	BOARD #:	TID#-00420_NDC_R1H	REV#	E2	SUN REV#	Not In VersionControl
LAYER NAME =	HS Assembly Top	TID #:	00420			
PLOT NAME =	Top Assembly Drawing	GENERATED :	3/5/2021	1:55:10 PM		TEXAS INSTRUMENTS

